

# AT-PRO3HD44M FPGA Updating Guide

New firmware to update, fix, or change functionality of products becomes available occasionally. Atlona has made this as easy as possible for updating on the job by simply downloading from Atlona.com and installing through a mini USB to USB A cable.

**NOTE:** Only use a Windows computer to update.

## I. Requirements:

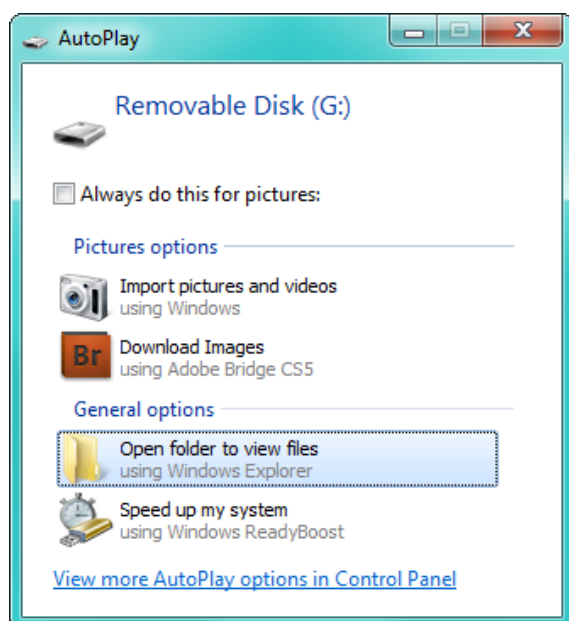
- a. AT-PRO3HD44M
- b. Desktop PC or Laptop PC w/ USB A port
- c. USB A to USB B cable
- d. Firmware (downloadable from atlona.com)

## II. Installation:

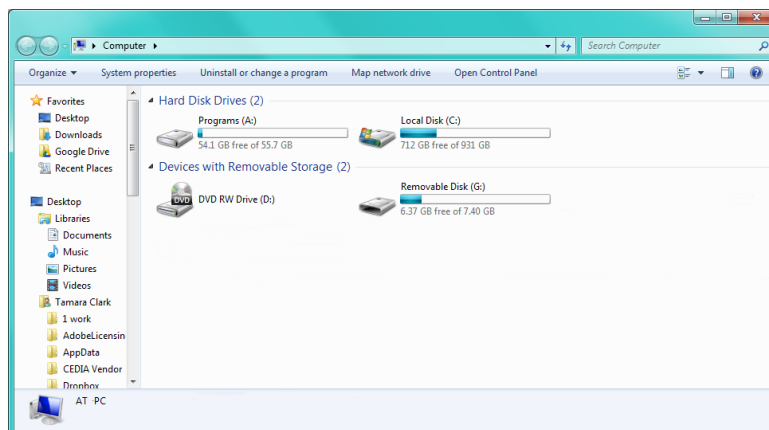
- a. Turn on the PRO3HD44M
- b. Press the 'function' button
- c. Press and hold the 3 button until the FPGA load screen displays
- d. Plug the PRO3HD44M into a computer using a USB B to USB A cable

## III. Firmware Upgrade:

- a. Click the option, "Open folder to view files" (if AutoPlay runs)



If the computer does not auto detect the connection, open "My Computer" and select the USB drive.



- b. Delete the file currently in the folder
- c. Place the latest FPGA firmware in the folder

The unit will reboot and the FPGA firmware upgrade will be complete.